

Boating is a popular activity for many Southlanders and we have a number of areas ideally suited to boating activities. We want everybody to enjoy their time on the water, but there are a few navigation safety rules that apply to ensure everyone stays safe.

## Safety information

### Wear a lifejacket

All vessels must have suitable lifejackets, easily accessible, for each person on board. They must be worn at all times on vessels 6 metres and under and at times of increased risk on all other vessels.

### Communication

Make sure somebody knows where you are going and when you are expected back. Contact Bluff Fishermen's radio on VHF Ch 61.

Take at least two forms of communication with you – VHF radio, flares, cellphone in a waterproof bag, EPIRB.

### Be prepared

Make sure you have the necessary equipment – anchor, bailer, oars, spare fuel, torch, first aid kit and warm clothes.

### Take care

Use caution and ensure you have plenty of room on the water when towing. Watch out for anyone in the water.

Avoid alcohol when boating.



## Know the rules

- ▶ All vessels, including jet skis, cannot exceed 5 knots within 200 metres of shore.
- ▶ A person under 15 years of age is not permitted to operate a vessel capable of exceeding 10 knots unsupervised.
- ▶ If you are involved in a collision or accident, you must notify the harbourmaster and Maritime New Zealand.
- ▶ Always ensure when you are diving that the dive flag Alpha is clearly displayed.
- ▶ Access to waterways, wharves or boat ramps must be kept clear.
- ▶ It is your responsibility to ensure you know the navigation safety rules. You may be subject to an infringement fee for offences against the *Southland Regional Council Navigation Safety Bylaws 2009* (reviewed 2015) for breaching any of the rules.  
**Full details can be found at [www.es.govt.nz](http://www.es.govt.nz)**

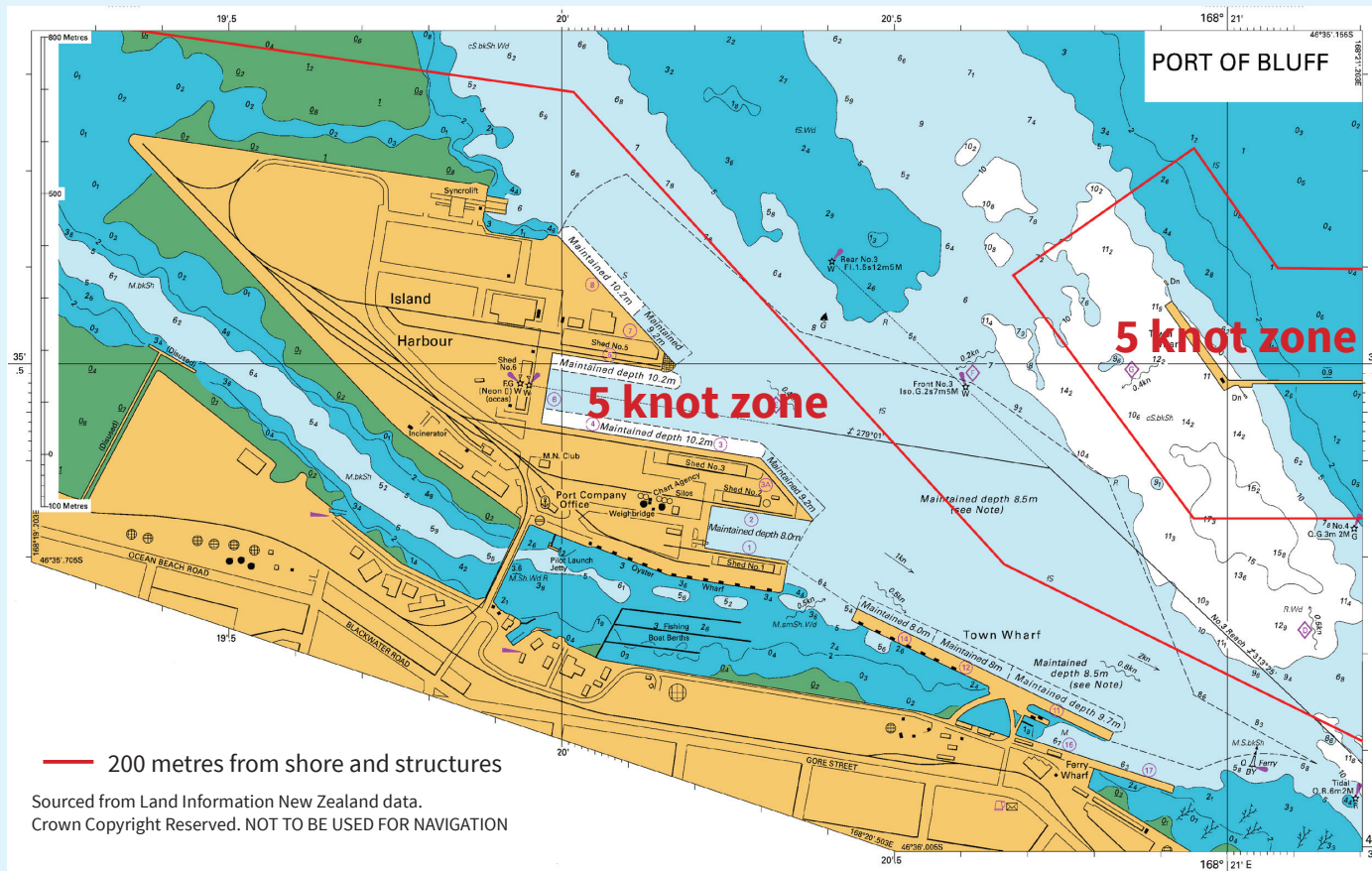
Published by Environment Southland, August 2017

# Navigation Safety Guidelines

## Bluff Harbour



# Bluff Harbour



— 200 metres from shore and structures  
 Sourced from Land Information New Zealand data.  
 Crown Copyright Reserved. NOT TO BE USED FOR NAVIGATION

## Speed limits



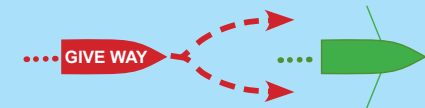
Watch your speed near the shore, wharves and jetties. Do not exceed 5 knots within:

- ▶ 200m of the shore or any structure
- ▶ 200m of any vessel flying Flag Alpha (diver's flag)
- ▶ 50m of another vessel
- ▶ 50m of a person in the water

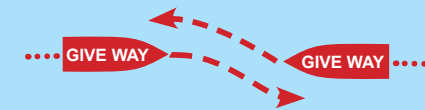


## Boating navigation tips

**Vessels overtaking:** Every overtaking vessel gives way, including sailing boats.



**Power vessels head on:** Both alter to starboard.



**Power vessels crossing:** Power vessels give way to others on their starboard (right) side. Give way boats should cross behind (sailing boats have different rules).

